

Automatic sliding door record 16 TSA

Supplementary manual **E**

	Page
1. Technical data	2
2. Elevation and plan views	3
3. Slow running plane	4 - 7
4. Quick running plane	8 - 12

Preparatory work according to manual record 16 STA up to and including point 7.11:

- Fixing of the cladding
- Fixing of the side screens
- Fixing of the door leaf guides* and the floor channel
- Fixing of the track carrying profile P1302
- Fixing of the sealing profile P1308 incl. brush P1352

* **Attention:** For the 20 mm profile system the door leaf guides must be underlaid to get a space of approx. 2 mm to the side screens, e.g. by using the intercalation's 370.000.005 (1 mm thick).

agtatec ag
Allmendstraße 24
CH-8320 Fehraltorf
Telefon +41 1 / 954 91 91
Telefax +41 1 / 954 92 00



© Copyright by agtatec ag, CH-8320 Fehraltorf

Date: 06/98, HS/KM, Artikel-Nr.: 16.783

1 Technical data

Opening widths A

- D-TSA 1'200 – 4'000 mm
- E-TSA 800 – 3'000 mm

Clear passage height G

- Recommended maximum value 3'000 mm

Total door leaf weights (max. 67 kg per carriage)

Standard:

- D-TSA max. 4 x 80 kg
- E-TSA max. 2 x 130 kg

Heavy duty drive:

- D-TSA-DUO max. 4 x 130 kg
- E-TSA-DUO max. 2 x 170 kg

Dimensions, incl. internal cover (see general plans)

- Height 200 mm
- Depth 225 mm

Standard module versions, dependent on A-dimension

Module length 1'670 mm:

- D-TSA 1'200 – 2'500 mm
- E-TSA 1'095 – 1'155 mm

Module length 2'320 mm:

- D-TSA 1'435 – 3'880 mm
- E-TSA 1'530 – 1'805 mm

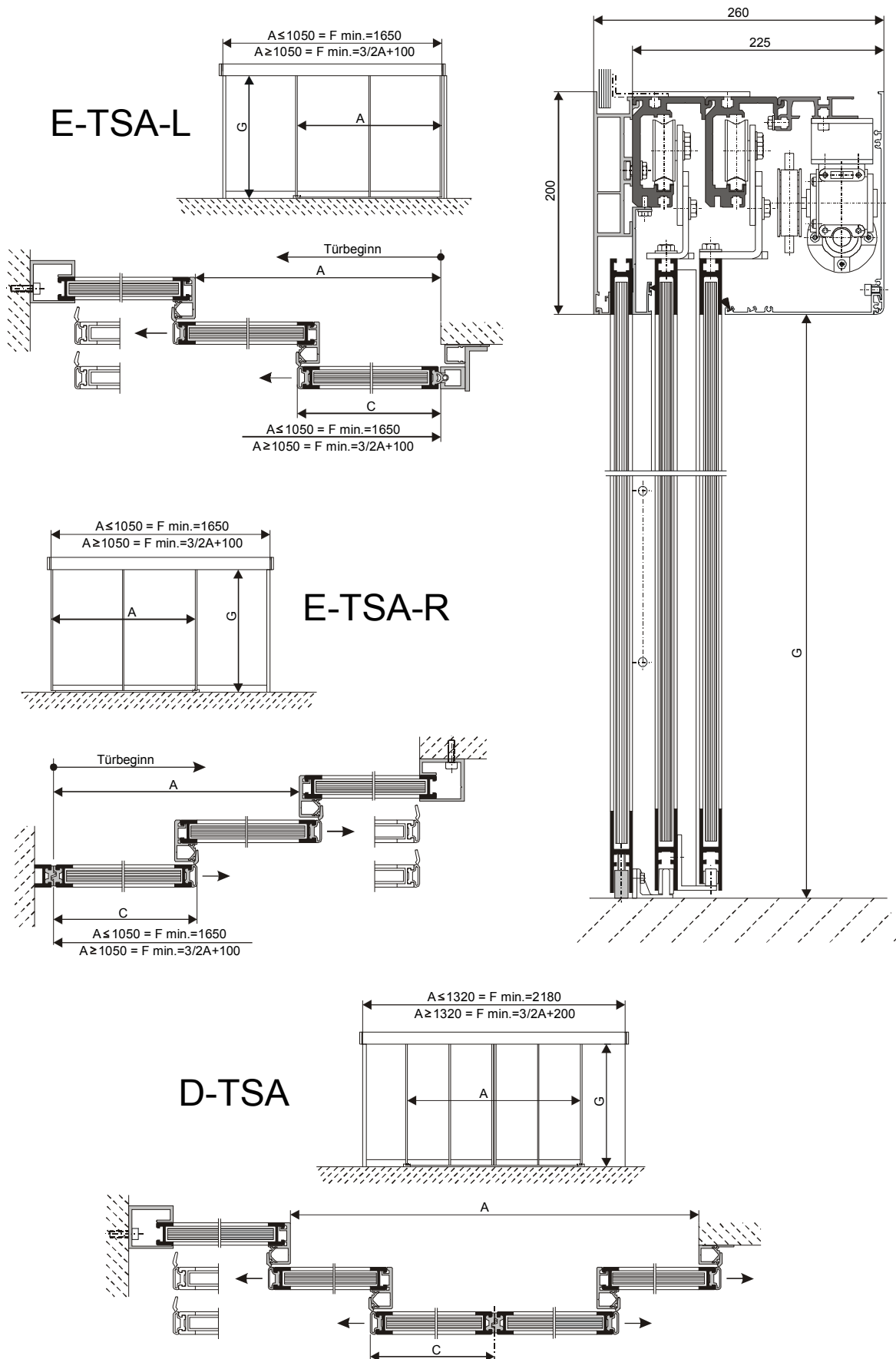
Versions of special modules, dependent on A-dimension

Module lengths

A-dimensions E-TSA

1'620 mm	1'065 – 1'105 mm
1'750 mm	1'150 – 1'235 mm
1'870 mm	1'230 – 1'355 mm
2'050 mm	1'350 – 1'535 mm
2'730 mm	1'805 – 2'215 mm
3'340 mm	2'210 – 2'825 mm
4'260 mm	2'825 – 3'745 mm

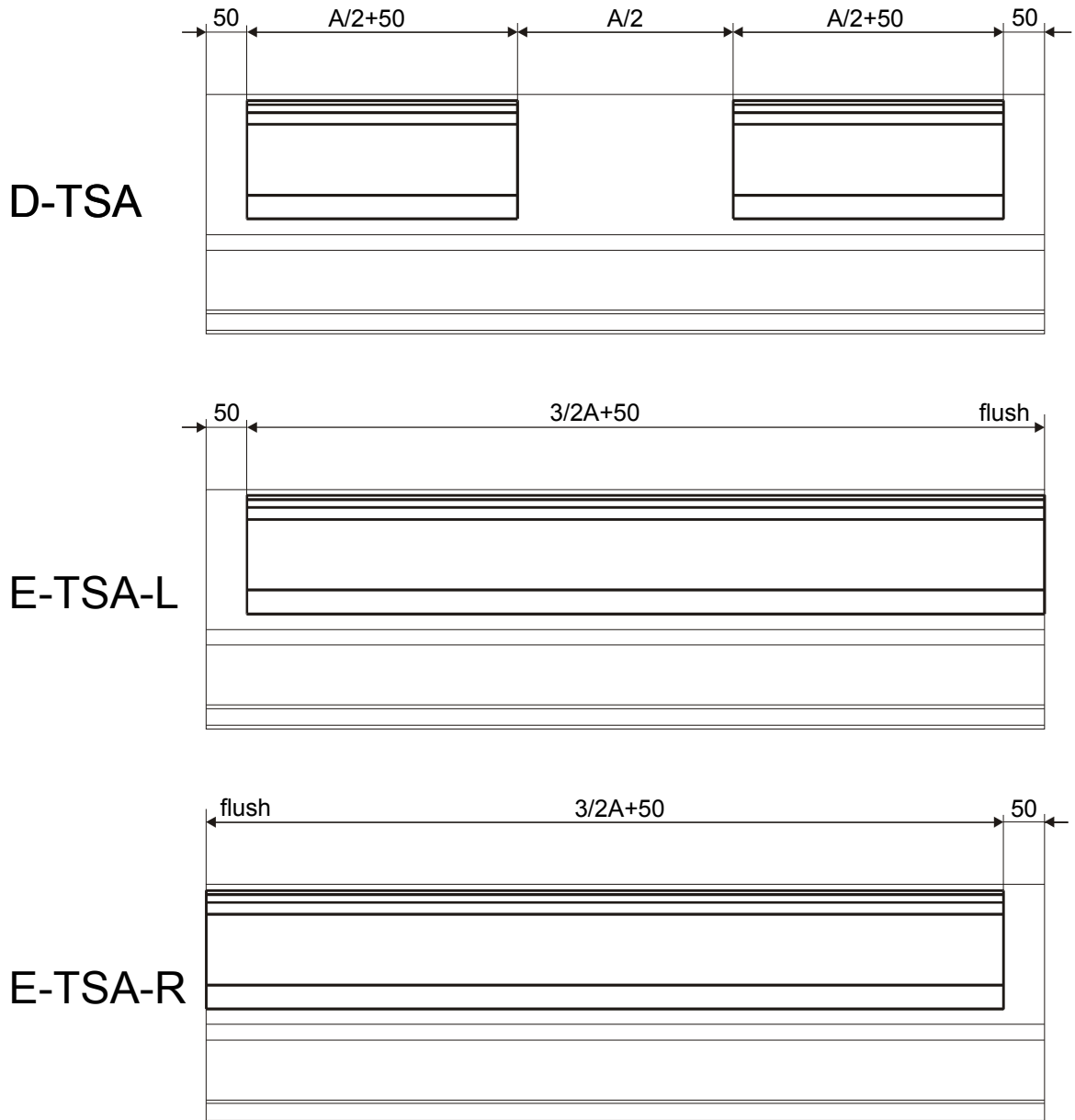
2 Elevation and plan views



3 Slow running plane

3.1 Track carrying profile P1302

Clean, hang in and align the track carrying profile



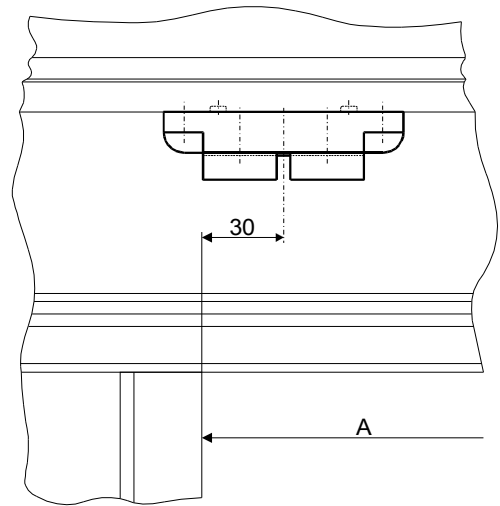
Slow running plane

3.2 Clamping piece 016.200.004

- Fix the clamping piece to the underside of the track carrying profile (2 pieces for D-TSA) (1 piece for E-TSA))
- The centre of the clamping piece is situated 30 mm in the door opening (area A) measured from the side screen



To mount the clamping piece it may be necessary to displace one of the fixing screws of the horizontal sealing profile P1308



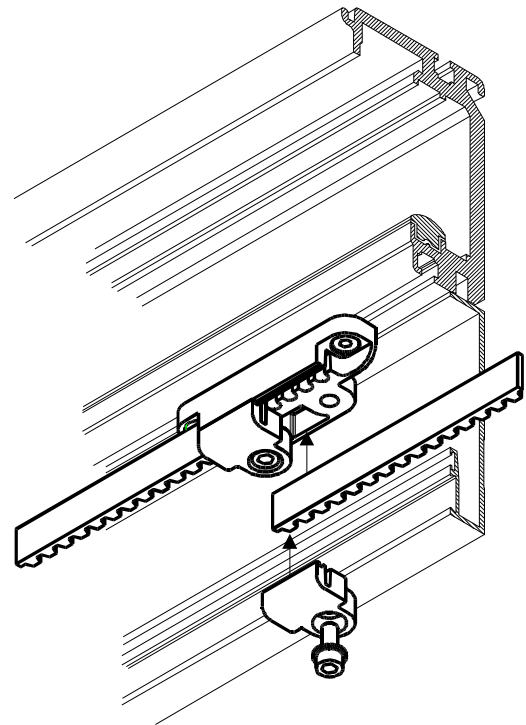
3.3 Gear belt

- Cut the gear belt (33.031) to the requested length

D-TSA $L = A/2 + 455$ (2 pieces)

E-TSA $L = A + 455$

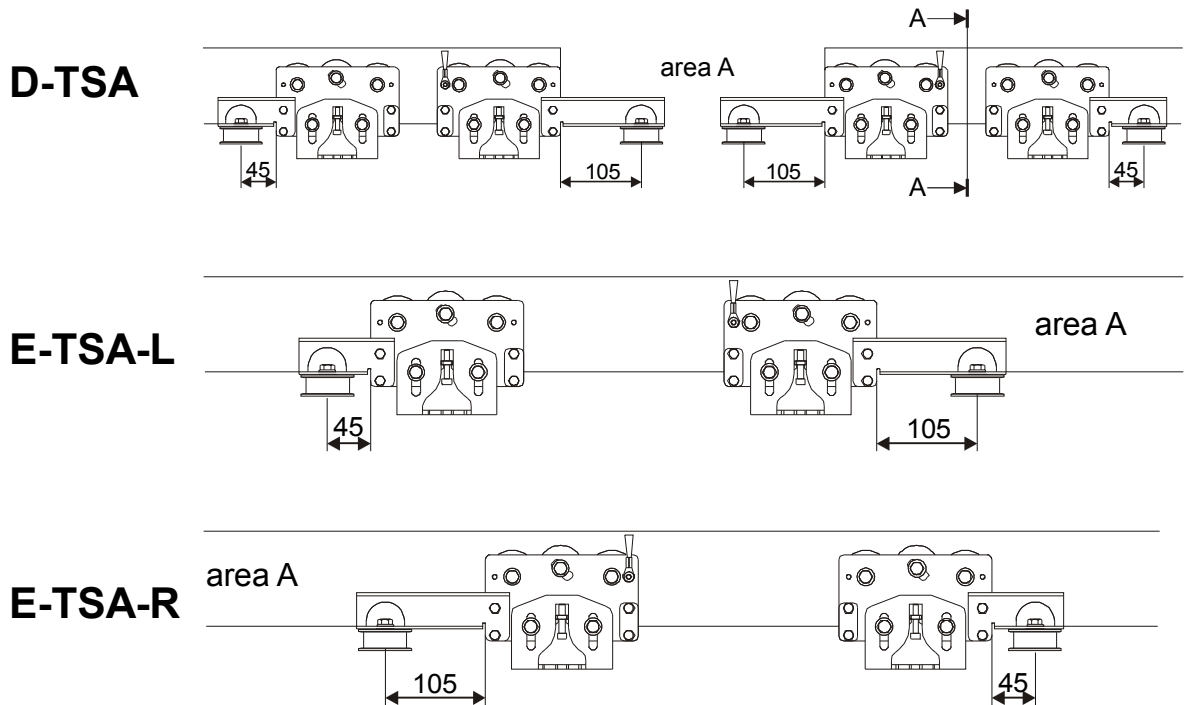
- Remove the clamping screws
- Insert the gear belt (3 teeth each) and fix again the clamping screws



Slow running plane

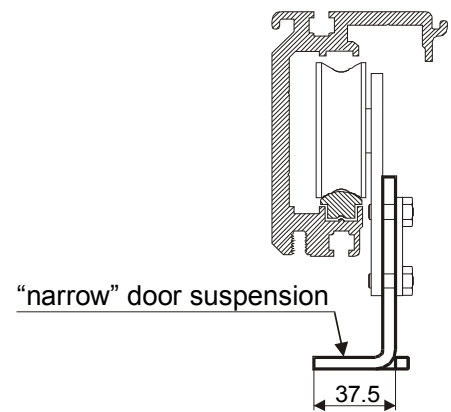
3.4 Carriage

- Install the carriages

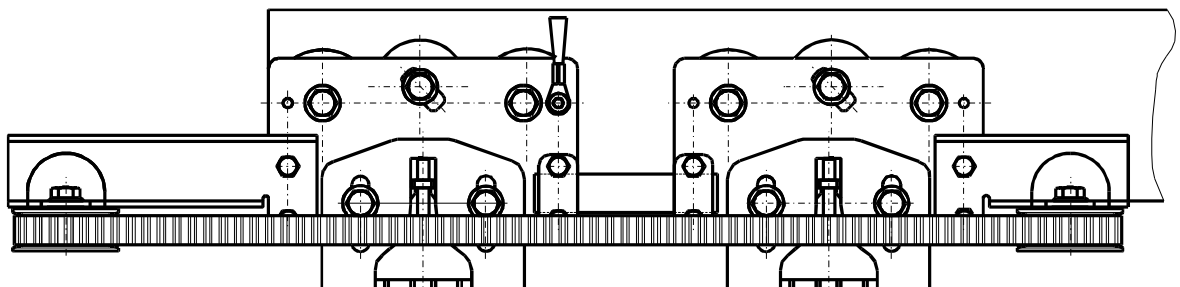


To the carriages of the slow running plane must be mounted the "narrow" door suspensions!

Section A-A



- Lead the gear belt around the guide pulleys



Slow running plane

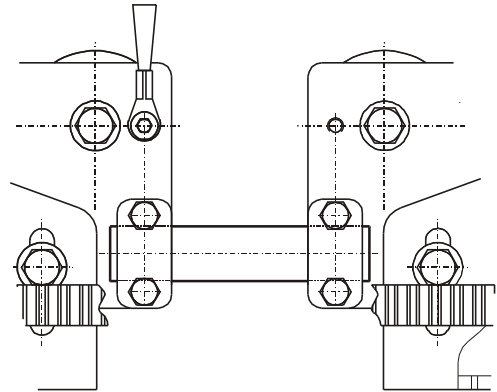
3.5 Carriage rail

- Cut the carriage rails (40.883) to the requested length

D-TSA $L = A/4 - 275$ (2 pieces)

E-TSA $L = A/2 - 275$

- Insert the rail and fix one side with the 2 screws
- Slightly tighten the gear belt by pushing the two carriages apart

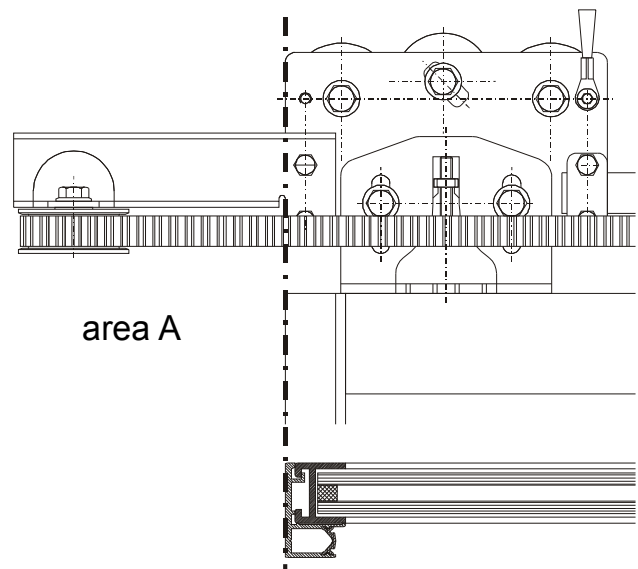


Do not tighten the gear belt too much since this will prevent the wheels from being correctly on the track

- Fix the rail with 2 screws also on the other side

3.6 Door leaves

- Install the door leaves
- Align the door leaves to the side screens (see manual pt. 7.16)
- Make the edge of the carriage level with the vertical door leaf profile
- Ensure that the door leaves can be moved all the way long



Loosen again the screws of the carriage rails and re-tighten them enabling the wheels again to correctly settle on the track (no distortion of the carriages)

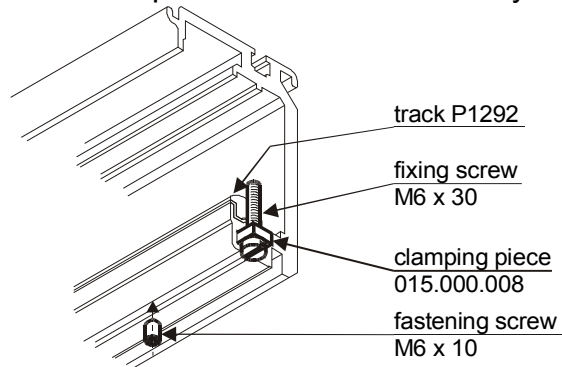
- Tighten the fixing device of the door leaves

Slow running plane

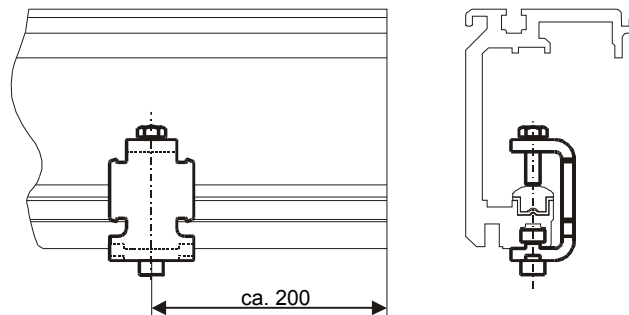
3.7 Fixing of the track

The track P1292 must be fixed to prevent it from horizontally shifting

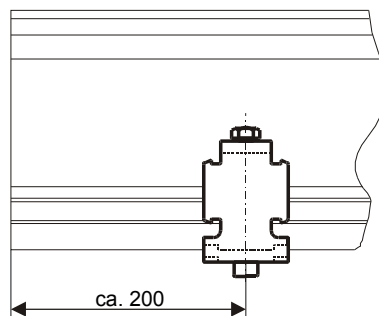
D-TSA



E-TSA-L

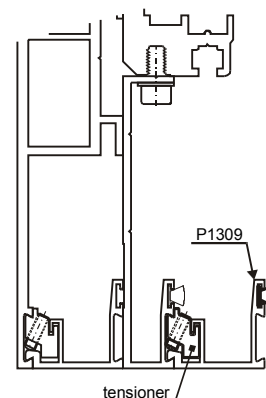


E-TSA-R



3.8 Blind profile

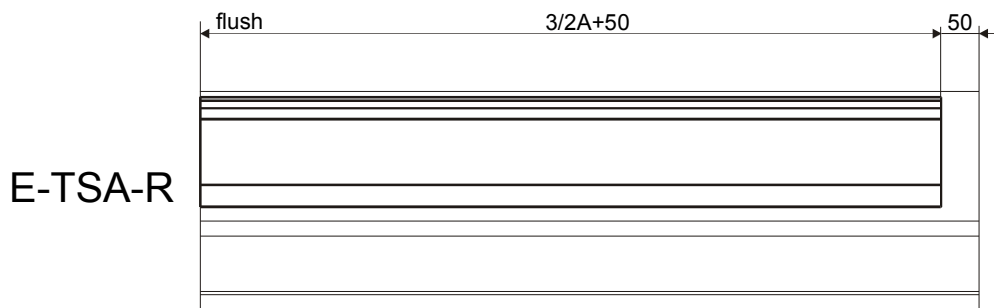
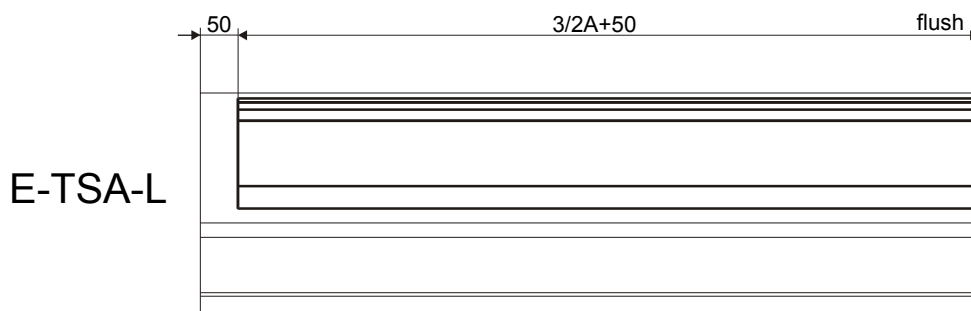
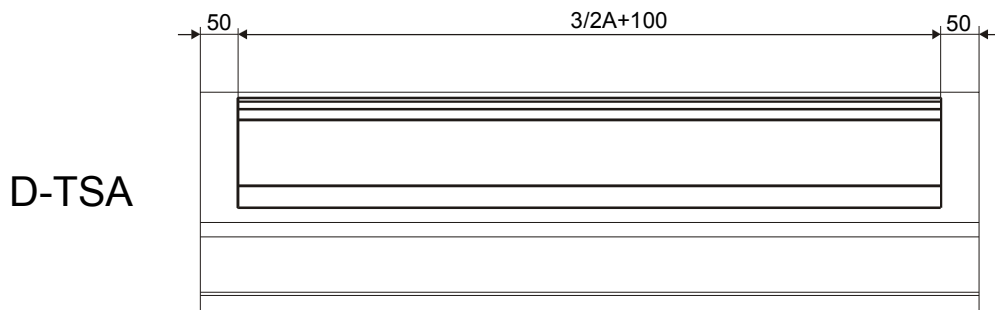
- Cut the blind profile P1309 incl. brush to the requested length ($L=A/2$) and fix it into the door opening (area A) by using tensioners (016.000.007)
- Secure the brush against slipping out by slightly squeezing the profile with pliers



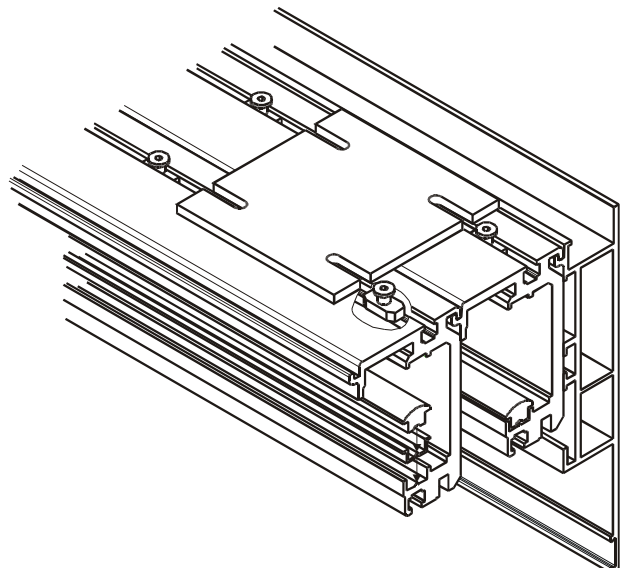
4 Quick running plane

4.1 Track carrying profile P1302

- Clean, install and align the track carrying profile



- Prepare the mounting of the reinforcing plates (insert retainers and screws)
- Slide in the reinforcing plates, distribute them regularly and fix them
- Insert rubber damping profile P1318
- Insert track P1292 (refer also to manual pt. 7.11)

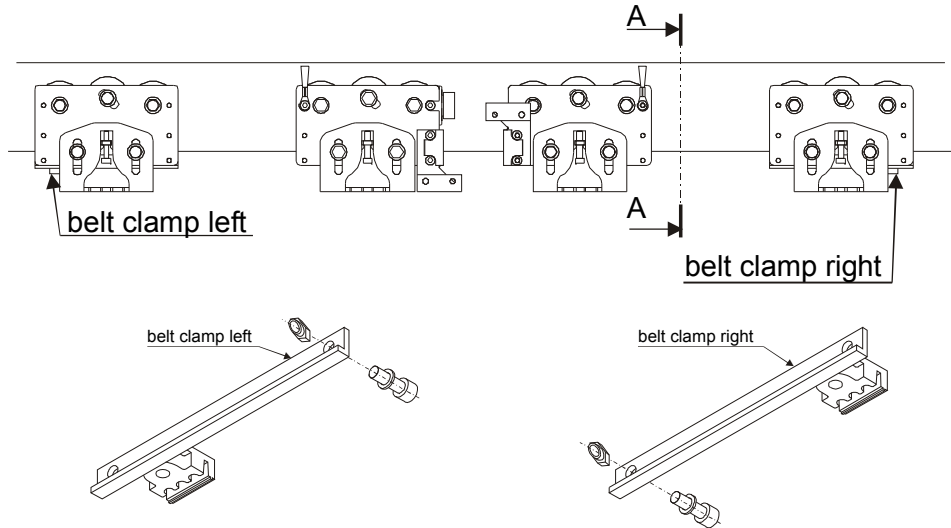


Quick running plane

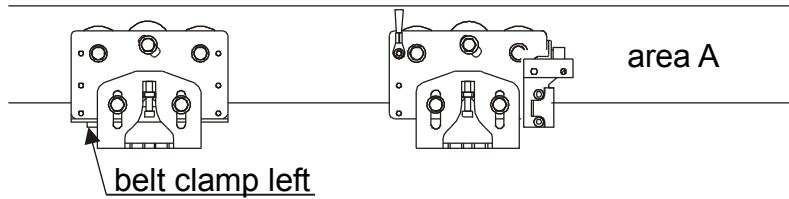
4.2 Carriages

- Install the carriages

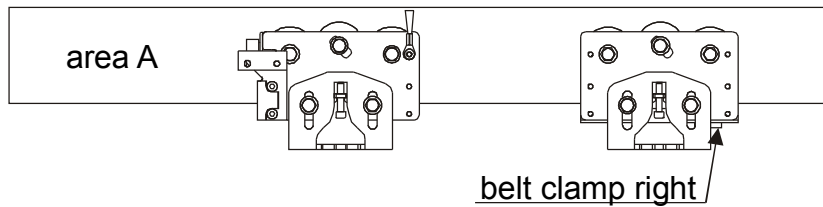
D-TSA



E-TSA-L

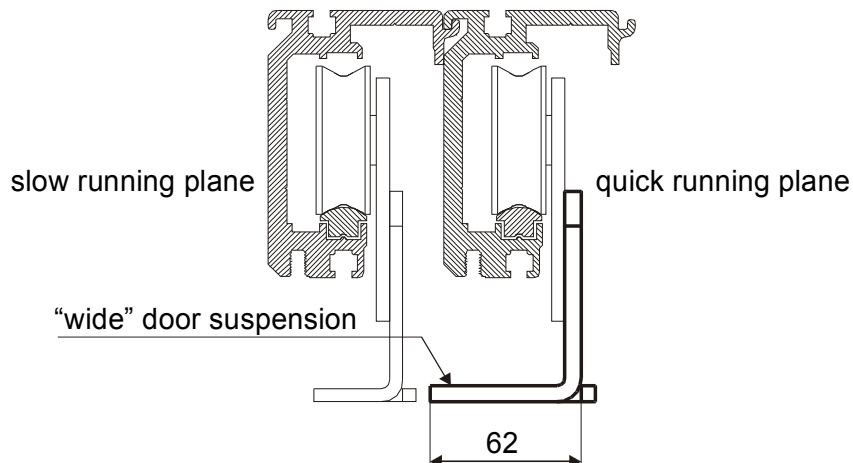


E-TSA-R



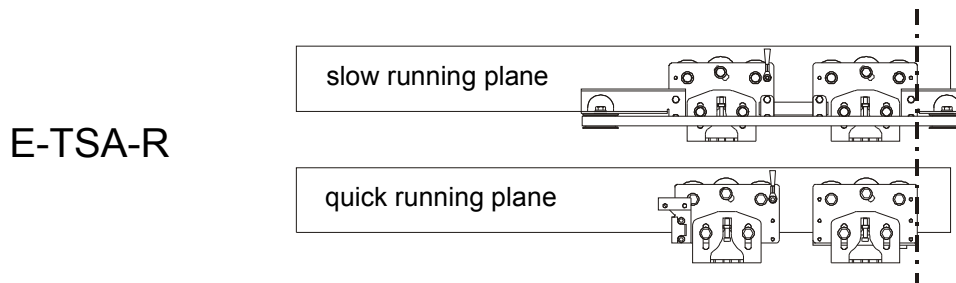
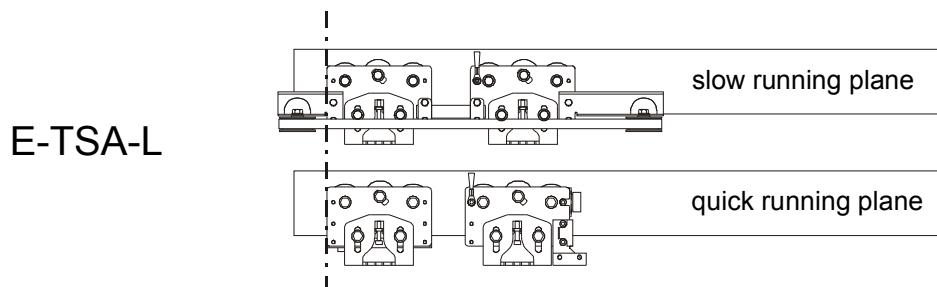
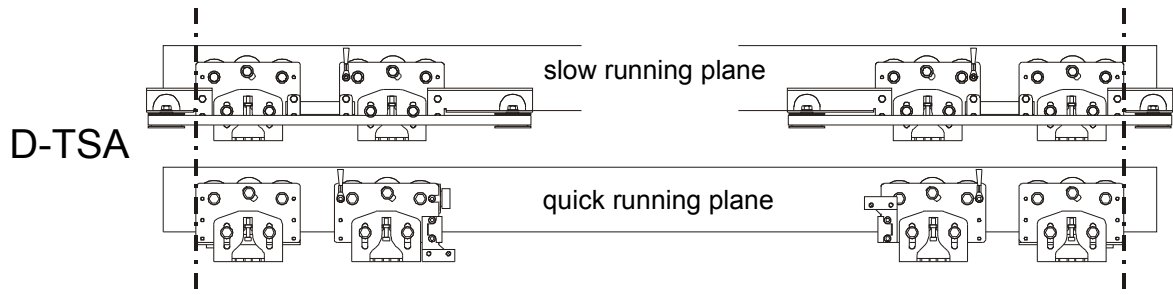
To the carriages of the quick running plane must be mounted the “wide” door suspensions!

Section A-A



Quick running plane

Alignment: When the door is open the outer carriages of the quick running plane are situated exactly in front of the outer carriages of the slow running plane



- Fix the gear belt to the belt clamps at the left and right by using the clamping screws

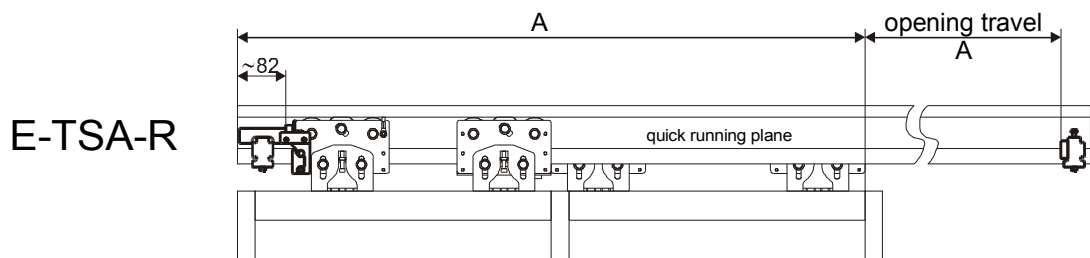
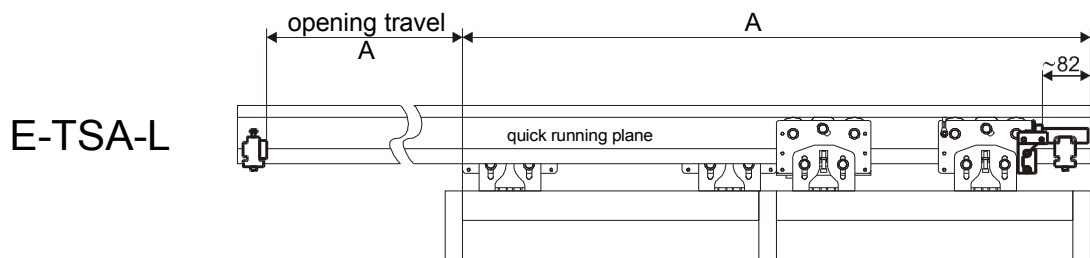
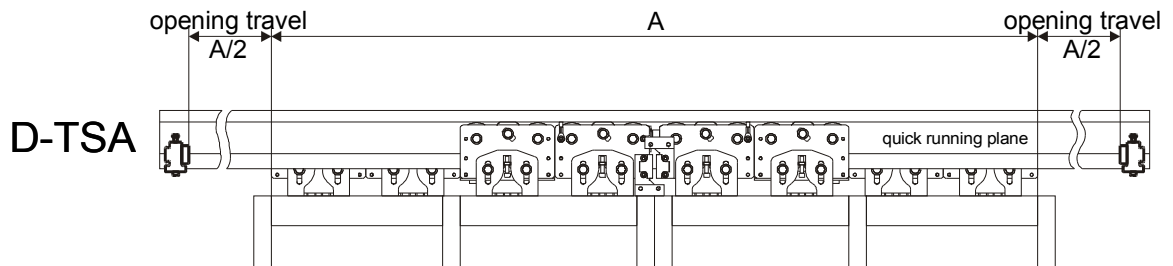
4.3 Door leaves

Install, align and fasten the door leaves

Quick running plane

4.4 End stops

- Install, adjust and fix the end stops



Continue according to the normal manual record 16 STA beginning with point 7.18 "Hanging-in of the drive module"